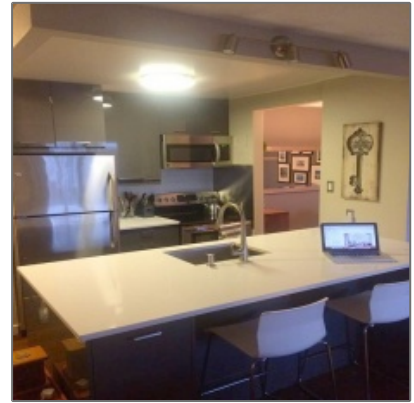
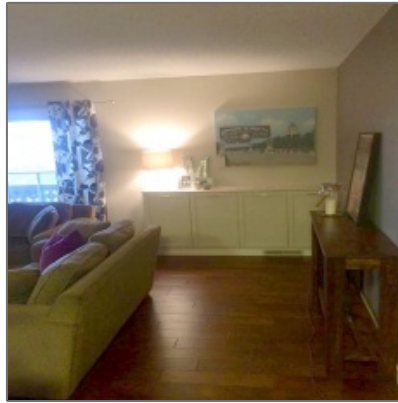


RENTED - Osborne Village

962 Sqft - 1005-230 Roslyn Rd., Winnipeg,
Manitoba



Property Description

RENTED Osborne Village

Monthly Rent: \$1850.00

Spectacular view from 10 floors up of the Assiniboine River and the Manitoba Legislative Building. This stunning open concept condo includes all furnishings, 2 bedrooms, 1 bathroom, dining area, balcony, outdoor roof top pool, underground parking and all utilities included.

Type:	Furnished
Lease Length:	Annual
Size:	962 sqft
Beds:	2
Bath:	1
Utilities Included:	Electricity, gas, water, cable, and internet
Parking:	Heated underground parking stall
Pets:	No
Restrictions:	No Smoking or Vaping of any kind
Inclusions:	Outdoor swimming pool, elevator, and insuite storage.

Please call our office at 204-477-1133 or email us at rentals@monopolyrealty.ca for further details.

Agent Info



Monopoly Property Management

(204) 477-1133

rentals@monopolyrealty.ca

- #2-733 Pembina Hwy, Winnipeg, MB R3M 2L8