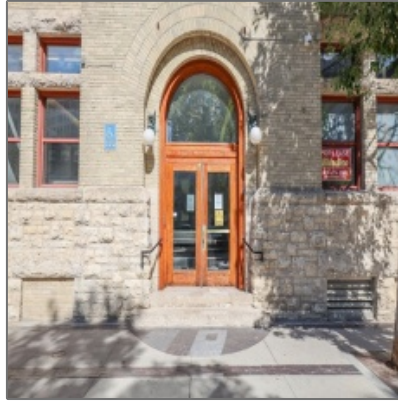


# RENTED - Exchange District

1,000 Sqft - 204-167 Bannatyne Street, Winnipeg,  
Manitoba



## Property Description

RENTED Exchange District

Monthly Rent: \$1800

Located in the Ashdown Warehouse, this beautiful 1000 sqft loft style unit blends character with a modern touch. Grand 12 foot ceilings, exposed brick and fir beams. Large kitchen island and breakfast bar, plus formal dining. The Primary bedroom has a double closet. Additionally, there is in suite laundry with ample storage. Check out the incredible views on the rooftop terrace, walking distance to fine dining, entertainment, The Forks, and more.


Type:	Unfurnished
Lease Length:	Annual
Size:	1000 SF
Beds:	1
Bath:	1
Utilities Included:	Water
Parking:	Covered secure stall
Pets:	No
Restrictions:	No smoking or vaping of any kind


Please call our office at 204-477-1133 or email us at [rentals@monopolyrealty.ca](mailto:rentals@monopolyrealty.ca) for further details.

## Agent Info



Monopoly Property Management

 (204) 477-1133

 [rentals@monopolyrealty.ca](mailto:rentals@monopolyrealty.ca)

- #2-733 Pembina Hwy, Winnipeg, MB R3M 2L8