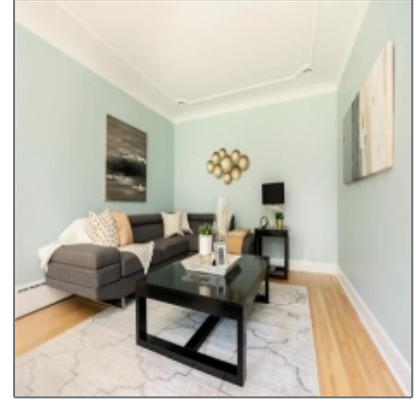
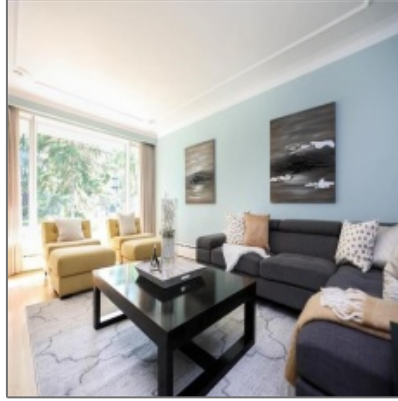


Rented- Osborne Village

1,334 Sqft - 3 Roslyn Crescent, Winnipeg, Manitoba



Property Description

Rented Osborne Village

Monthly Rent: \$2200.00

This beautiful 4 bedroom house is located on Roslyn Crescent in Osborne Village. This house is a short walk to downtown, grocery stores, Wellington Crescent, and major bus routes. The main floor features a bright and spacious formal dining room, a large living room, 2 bedrooms, 1 bathroom and an updated kitchen. The modernized finished lower-level features 2 more bedrooms, a 3-piece bathroom, storage space, laundry room and a sizeable rec room.


Type:	Unfurnished
Lease Length:	Annual
Size:	1334 Sqft
Beds:	4
Bath:	2
Utilities Included:	None
Parking:	Single detached garage
Pets:	No
Restrictions:	No Smoking or Vaping of any kind


Please call our office at 204-477-1133 or email us at rentals@monopolyrealty.ca for further details.

Agent Info



Monopoly Property Management

 (204) 477-1133

 rentals@monopolyrealty.ca

- #2-733 Pembina Hwy, Winnipeg, MB R3M 2L8