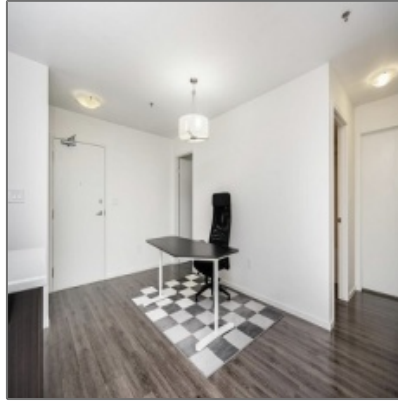


RENTED - Bridgwater

1,033 Sqft - 330-25 Bridgeland Dr, Winnipeg,
Manitoba



Property Description

RENTED Bridgwater

Monthly Rent: \$1800.00

Experience this beautiful 2 bedroom 2 bathroom condominium suite, located in Bridgwater Forest. Open concept, shows like new. Modern kitchen with huge pantry room and stainless steel appliances. Family room with large patio facing the visitor parking. Underground parking with one heated indoor spot included. Close to University of Manitoba, walking trail, and shopping. Building offers party room, gym, visitor parking and secure entrance.


Type:	Unfurnished
Lease Length:	Annual
Size:	1033 sqft
Size:	2
Beds:	2
Bath:	Gas, electricity, and water
Utilities Included:	1 underground stall
Parking:	No
Pets:	No Smoking or Vaping of any kind
Restrictions:	Fitness Facility, Elevator, Multi-use Room, Storage
Inclusions:	Space


Please call our office at 204-220-4230 or email us at rentals@monopolyrealty.ca for further details.

Agent Info



Monopoly Property Management

 (204) 477-1133

 rentals@monopolyrealty.ca

- #2-733 Pembina Hwy, Winnipeg, MB R3M 2L8