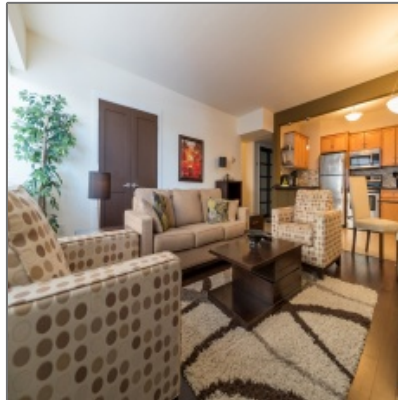


Rented - Crescentwood

950 Sqft - 701 - 245 Wellington Crescent,
Winnipeg, Manitoba



Property Description

Rented

Monthly Rent: \$2100-\$2500.00 per month, depending on length of term

This beautifully decorated two bedroom, one bathroom unit offers 950 sq ft of living space has an awesome balcony view of the river. Completely upgraded with granite counter tops, stainless steel appliances, laminate, tile and neutral paint colors. Furnished with modern décor this unit is comfortable, cozy and offers all the amenities of home.

All utilities included (Electricity, water, cable and internet)

Please call our office at 204-477-1133 or email us at rentals@monopolyrealty.ca for further details.

Details:

Type:	Furnished
Lease Length:	Negotiable
Size:	950 Sq. Ft
Beds:	2
Bath:	1
Utilities Included:	Electricity, water, cable, internet and phone
Parking:	1 outdoor stall
Pets:	No
Restrictions:	No smoking or vaping of any kind

Agent Info



Monopoly Property Management

(204) 477-1133

rentals@monopolyrealty.ca

- #2-733 Pembina Hwy, Winnipeg, MB R3M 2L8