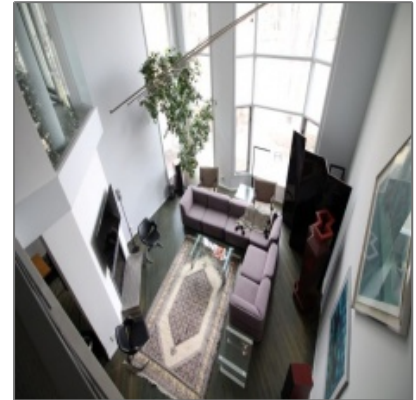


RENTED - Furnished two bedroom - 1800 Wellington Cres

2,063 Sqft - 4-1800 Wellington Crescent, Winnipeg,
Manitoba



Property Description

RENTED

Furnished Condo, all utilities included

Monthly Rent: \$3400

One of a kind furnished condo on Wellington near Assiniboine Park. Beautiful living area with open kitchen and patio off the front. Large windows to enjoy the view of Wellington Crescent. Master bedroom with glass wall and loft sitting area. Two bedrooms, two bathrooms, finished basement with family room. Parking for two. Great location for walking, running, cycling. Short drive to Polo Park or over to the shops on Kenaston.

Please call our office at 204-220-4230 or email us at rentals@monopolyrealty.ca for further details.

Details:

Type:	Furnished
Lease Length:	Short or long term
Beds:	2
Bath:	2
Utilities Included:	All utilities included
Parking:	Garage parking for 2 cars
Pets:	No
Restrictions:	No smoking or vaping of any kind

Agent Info



Monopoly Property Management

(204) 477-1133

rentals@monopolyrealty.ca