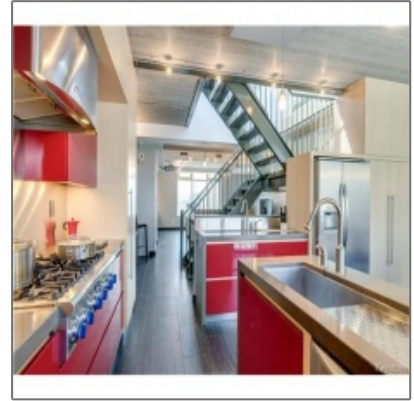


RENTED - Exchange District

2,100 Sqft - 232 Waterfront Dr. Winnipeg, Manitoba



Property Description

RENTED

Monthly Rent: \$5000.00 (depends on lease length)

This furnished rental is tailored for the Executive and those who can appreciate the value of this property. This is one of the most beautiful condo in the Exchange on Waterfront. This condo is a 3 level townhouse, 2100 sq ft, 2 bedroom directly adjacent to Steven Juba Park with East West exposure The unit comes with a double garage & private elevator with direct access to your rental suite! The deluxe kitchen has concrete look counters with high end Thermador 6 burner gas range. The Master bedroom has a beautiful ensuite with double square stainless steel sinks & Kohler shower/body spray/rain shower automation. The spacious living room has an overhead projection television, and the entire unit has fantastic closet space! The unit has floor to ceiling windows, in floor heat & a balcony for your morning coffee! There is also a private roof top terrace perfect for entertaining with spectacular city views.

Type:	Furnished
Lease Length:	Annual
Size:	2100 sq ft
Beds:	2
Bath:	2
Utilities Included:	Dependent on lease length
Parking:	Double car garage
Pets:	No
Restrictions:	No Smoking or Vaping of any kind
Inclusions:	Elevator, rooftop patio, two balconies

Please call our office at 204-477-1133 or email us at rentals@monopolyrealty.ca for further details.

Agent Info



Monopoly Property Management

(204) 477-1133

rentals@monopolyrealty.ca