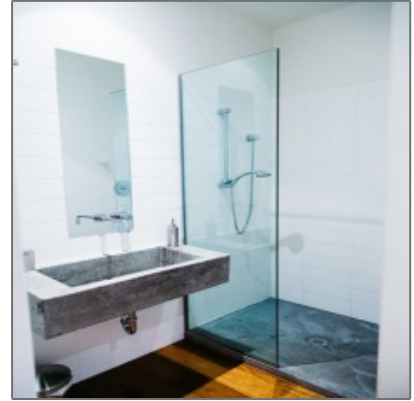
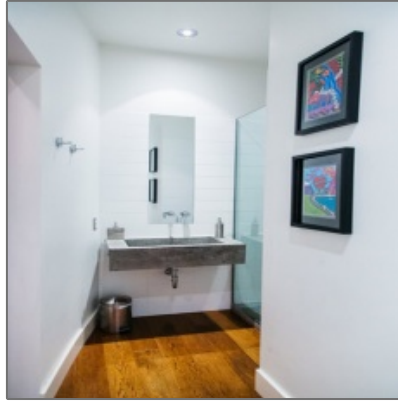


RENTED - Exchange District

1,810 Sqft - 601 - 181 Bannatyne Ave, Winnipeg,
Manitoba



Property Description

Fabulous New York style penthouse loft condo in the heart of the Exchange District. Premium location on the 6th floor. At 1810 SF this one of a kind condo features 2 bedrooms, and 2 bathrooms, incredible 15 foot ceilings, gorgeous exposed brick walls, wide plank hardwood floors and massive windows. Sleek modern deluxe kitchen with high-end appliances and fabulous entertainment size island. Very large and open great room area. Master bedroom is tucked away in a private and spacious area of the condo and has a stunning en suite. Additional bedroom or office and 2nd bathroom is equally appealing. Just some of the many unique design features of this condo include the custom hot rolled steel curved doors, concrete sinks and curved walls. One underground heated parking stall next to the elevator.

Details

Type:	Furnished
Lease Length:	Long Term
Size:	1810 Sq Ft.
Beds:	2
Bath:	2
Utilities Included:	Cable, internet, electricity, and water
Parking:	1 underground heated stall
Pets:	Small pet only
Restrictions:	No smoking or vaping of any kind
Inclusions:	

Agent Info



Monopoly Property Management
☎ (204) 477-1133
✉ rentals@monopolyrealty.ca

- #2-733 Pembina Hwy, Winnipeg, MB R3M 2L8
