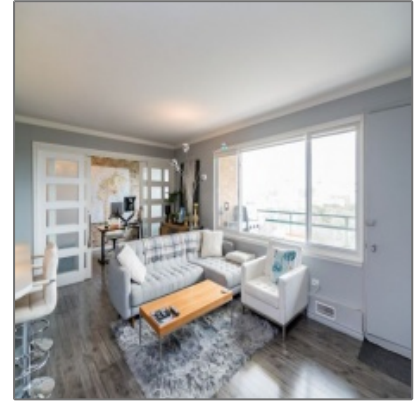
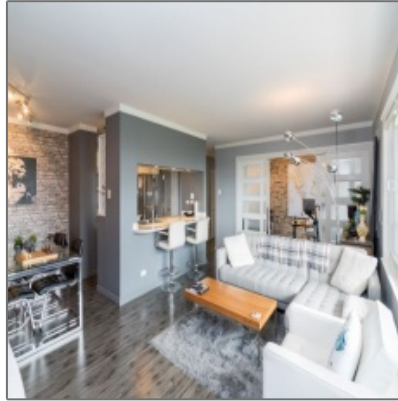


# RENTED

- 12C-300 Roslyn Road, Winnipeg, Manitoba



## Property Description

### RENTED

Monthly Rent: \$1950.00

12th floor penthouse unit with balcony overlooking the downtown skyline, nestled on the river in Osborne Village, minutes away from Safeway, Shoppers, Shell, Starbucks and restaurants. The \$1950 rent includes a heated underground parking spot and all utilities (heat/AC, water, electricity and basic cable TV package). This two bedroom/one bathroom also includes an outdoor pool and private park on the river with direct access to skating in the winter. The apartment was fully renovated in 2015 to include an open concept kitchen, stainless steel appliances (incl. dishwasher + garburator), oversized bathtub, faux brick feature walls and modern track lighting. Building is pet-friendly and well managed with nightly security on-site and room to store bikes indoors.

Please call our office at 204-220-4230 or email us at [rentals@monopolyrealty.ca](mailto:rentals@monopolyrealty.ca) for further details.


#### Details:


Type:	Unfurnished
Lease Length:	Long term
Beds:	2
Bath:	1
Utilities Included:	Heat, water, electricity, basic cable TV package
Parking:	Heated underground parking spot
Pets:	To be approved
Restrictions:	No smoking or vaping of any kind
Inclusions:	Outdoor pool and indoor bike storage

## Agent Info



Monopoly Property Management

 (204) 220-4230

 [rentals@monopolyrealty.ca](mailto:rentals@monopolyrealty.ca)

- #2-733 Pembina Hwy, Winnipeg, MB R3M 2L8