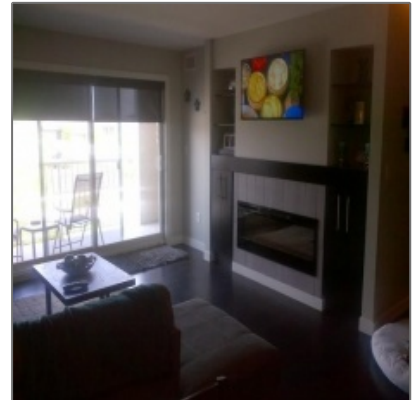
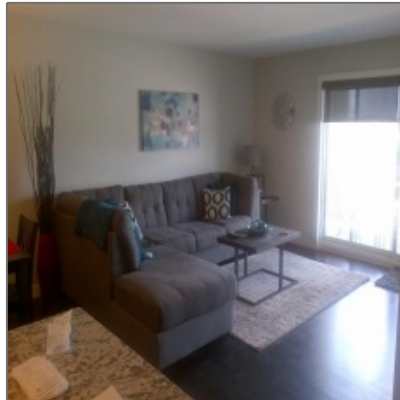


# Rented - Bridgwater Forest

1,016 Sqft - 208-235 Bridgeland Dr. S, Winnipeg,  
Manitoba



## Property Description

Modern 3 storey attractive condominium in a great location in Bridgwater Forest! This unit comes with maple hardwood floors, modern kitchen with maple cabinets, granite counter tops, under mount sinks and 6 stainless steel appliances. The condo features in suite laundry, elevator, ceramic tile in bathroom and entrance. Beautiful open modern floor plan with separate furnace, central air conditioning, fireplace, storage unit and covered parking is available.


### Details

Type:	Unfurnished
Lease Length:	Negotiable
Size:	1016 Sq Ft
Beds:	2
Bath:	1
Utilities Included:	Water
Parking:	Covered Spot
Pets:	Allowed
Restrictions:	No smoking or vaping of any kind
Inclusions:	Central air, and storage unit

## Agent Info



Monopoly Property Management

 (204) 477-1133

 rentals@monopolyrealty.ca

