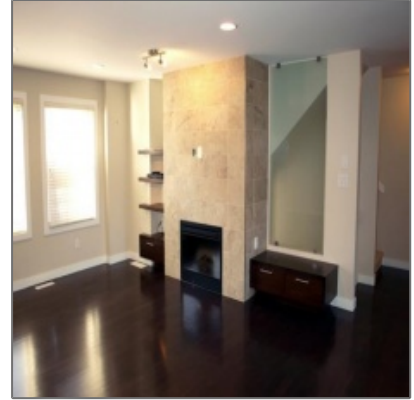
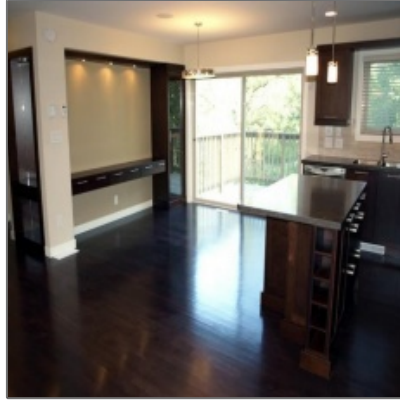




# Rented: Royalwood Condo

## 3 bed 2.5 bath

1,745 Sqft - 19-455 Shorehill Drive, Winnipeg,  
Manitoba



### Property Description

---

Rented

Rent \$2200 per month.

Gorgeous Royalwood townhouse condo. This end unit condo has 3 bedrooms and 2.5 bathrooms, including a 4 piece en suite off the master bedroom. A large gorgeous kitchen opens into a spacious great room with fireplace. Off the great room is a 17 x 8 raised deck that looks out over fantastic green space in the back yard. Walk out of the den on the lower level to a lovely patio, perfect for relaxing and entertaining in the summer.

#### Details


Type:	Unfurnished
Lease Length:	Negotiable
Size:	1745 Sq Ft.
Beds:	3
Bath:	2.5
Utilities Included:	None
Parking:	Double Attached Garage
Pets:	Negotiable
Restrictions:	No smoking or vaping of any kind
Inclusions:	


### Agent Info

---



Monopoly Property Management

 (204) 220-4230

 rentals@monopolyrealty.ca

- #2-733 Pembina Hwy, Winnipeg, MB R3M 2L8

---